

THE
FUTURE
IS
NOW.

The upgrade the game's been waiting for.

FTR SOLAR DRIVE CANOPY



Technology to Power Your Game

The FTR Golf flagship Solar Drive Roof system generates 360 watts of power to enhance your game. With our cars running longer, your carbon footprint is reduced, making your course greener than the rest.

By utilizing a user-friendly mobile app, you can monitor and control the input power to optimize your utilization of solar energy

TECHNICAL SPECIFICATIONS

- Dimensions: 1894 x 1104 x 106mm
- Weight: 15.5KG
- Frame Material: Aluminum and Stainless Steel
- Dimensions: 559x324x262 mm

PV SPECIFICATIONS

- Junction Box: IP 68
- Operating temperature range: -40C to 85C
- Maximum System Voltage: DC1500V (IEC)
- Maximum series fuse rating: 18A Max-
- Power (Pm): 360
- Power Tolerance: 0-5%
- Max-Power Voltage (Vm): 34.8
- Open-Circuit Voltage (Voc): 42.7
- Short-Circuit Current (Isc): 10.85A
- Module Efficiency: 21.2%

MPPT PV CHARGE CONTROLLER

- Controller Type: Boosting MPPT
- Battery Voltage: 48V
- Charging Conversion Efficiency: 90-97%
- Maximum Charging Current: 8A
- Maximum PC Input Current: 10A
- Continuous Charge Current: 15A to 50A

BLUETOOTH APPLICATION

- Bluetooth Smartphone application available on Apple or Google Play
 - Monitor Power Recovery
 - Measure Savings
 - Data Historian
 - Update Firmware

FTR POWER SYSTEM

High Energy, Long Lasting.

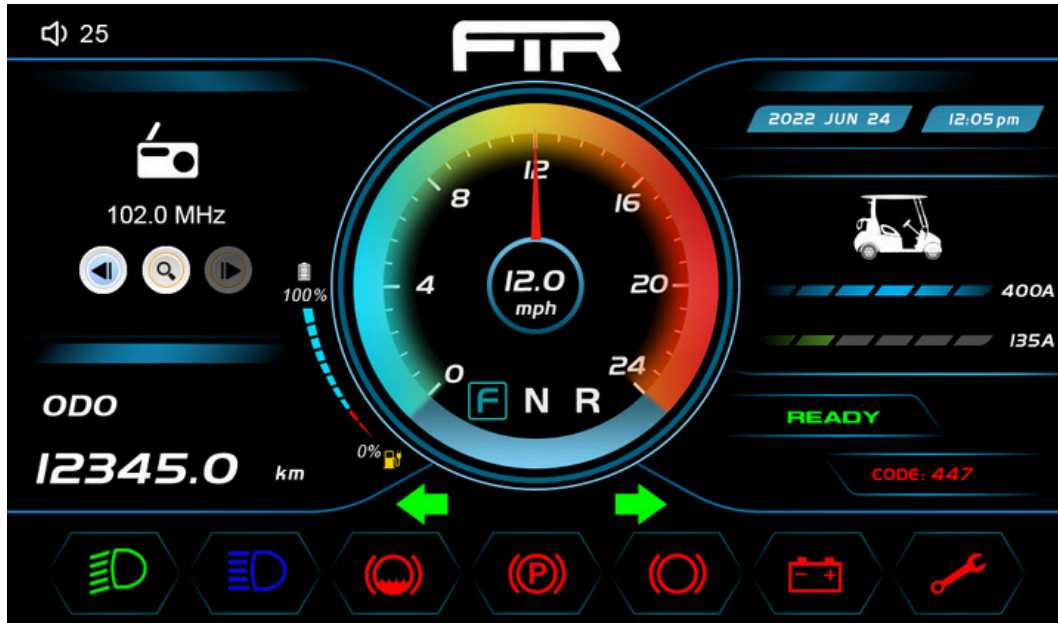
The FTR Lithium Iron Phosphate (LiFePO₄) Battery Pack is custom-built for the golf car operation. LiFePO₄ batteries are known for their high energy density, long cycle life, and excellent safety characteristics, making them a popular choice for applications that require high power output and long-term reliability, such as electric vehicles, renewable energy systems, and backup power supplies.

Compared to other lithium-ion batteries, LiFePO₄ batteries have several advantages. They have a longer cycle life, meaning they can be charged and discharged many more times without significant degradation.



NEW FOR 2026

Touch Screen Display - All Models



MODEL 2

THE FLAGSHIP FTR

TECHNOLOGY TO POWER YOUR GAME

Crafted with the Customer in mind, the FTR Golf Car ushers in a new era of technology and style that captures everyone's attention.

As you settle into the seat, grasp the premium leather steering wheel, and accelerate, you'll be immediately engaged.

FTR Golf Cars are more energy-efficient than traditional carts, allowing you to extend your driving time between charges with a state-of-the-art 370-watt FTR Solar Drive canopy and a sophisticated LiFEPO4 Battery Pack.

Even on sunless days, FTR Cars can be plugged into any standard outlet, reducing your charging time by one-third compared to standard lead-acid batteries.

Maintenance is minimal, giving you more time for yourself!

We aim to streamline your experience, save you time, and lessen your carbon footprint all at once.

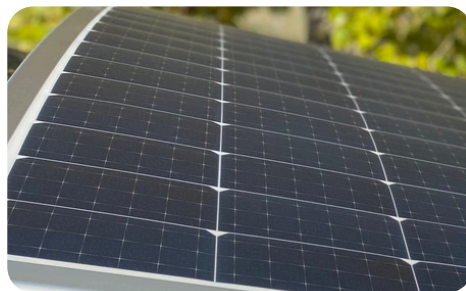


Premium Seating



Premium Leather Seating offers comfort and function while you play. Offered in Two-Tone, Diamond, and Sport Patterns

Power to Run all Day



FTR GOLF Flagship Solar Drive Roof system provides 360 watts back into your game. Our Cars run longer while keeping your carbon footprint down and your course greener than the rest.

Stylish Ride



Stock 14" Aluminum Rims in a variety of Designs and Colours. Letting you ride in style and comfort.

Technical Specifications

POWER

- Motor: 5KW AC Motor with 350a Controller
- Battery: 51.2V 105AH 5.376 KWh LiFePO4
 - Charge Efficiency: 99%
 - Cycles @ 80%: 3000
 - Charge Temperature: 0C to 50C
 - Operating Temperature: -20C to 40C
 - Storage Temperature: -20C to 40C
- Charging: Onboard 110v Outlet
 - 3-hour charge time
- Roof Charging: 370 Watt, 8 Amp/hr Max Output
- Range: 50km+ (Depending on Speed, temperature, terrain, and cloud cover)

SUSPENSION AND TIRES

- Front Suspension: Independent
- Rear Suspension: Horizontal Stabilization and Independent Spring Hydraulic Shocks
- Brakes: Self-Adjusting Mechanical Drum
- Parking Brake: Electromagnetic and Mechanical
- Wheels: 14"

DIMENSIONS & CAPACITIES

- Estimated Dry Weight: 650 LBS
- Length: 98"
- Width: 48"
- Height: 78-83"
 - Dependent on Rim, Tire and Lift
- Ground Clearance: 5-9"
- Wheelbase: 66"
- Turning Radius 2.9M
- Towing Capacity: 1500lbs

FEATURES

- Lighting: LED Headlights, Brake Lights, and Turn Signals
- Premium Leather Wrapped Steering
- Premium Folding Windshield
- Driver Side Golf Ball & Club Washer
- Passenger Side Cooler
- Club Cover Rain Protector

ENTERTAINMENT

- Automotive Dash with Bluetooth Stereo
- Touchscreen Display
- Dual Front Speakers
- Dual 2.1A USB Fast Chargers
- 12V Aux Charger
- Infographic Display
 - Odometer, speedometer, lights, diagnostics, and Battery Indicator

ROOF COMPATIBILITY

- FTR Solar Drive S6F
- HD Black Plastic
- HD Colour Match Plastic

OPTIONAL FEATURES

- Premium SeaDek Floormat
- Premium Club Cover
- Dual Sand Bottles
- Premium Coolers
- Folding Side Mirrors

WARRANTY

- Frame: LIFETIME
- Battery and BMS: 8-Year
- Canopy Solar System: 5-Year
- Car Parts & Components: See Detailed Warranty



MODEL 2

Standard Accessories



Ball & Club Washer



Refreshment Cooler



Sand & Seed Bottles



Club Cover

COLOUR OPTIONS - ALL MODELS



Black



White



Titanium



Hydro Blue



Sky Blue



Navy



Burgundy



Cherry Red



Orange



Cream



Lime Green



Mint

Packaging Options

CHROME GRILL



BLACK GRILL



RIMS



14-1



14-2



14-3



14-4



14-5



12-1



12-2

Premium Seating

Diamond, Two-Tone, or Sport



Seat Colours



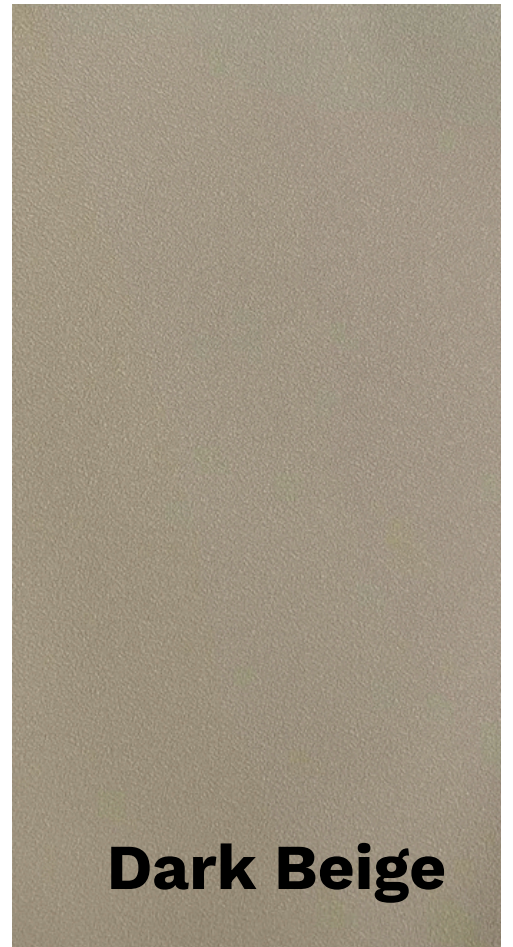
Brown



Grey



Light Beige



Dark Beige



Incredible golf cars. Unparalleled service.

We're proud of our golf cars. When you get them on your course, you will be too.

More than a comprehensive warranty—although we have that too—FTR Golf Cars come with a promise. When your cars need service, you are our priority. Call us, someone will answer—a real human being dedicated to making your day easier.

We'll send a skilled technician your way.

Not through an outsourced service that doesn't know the product, but through us, from us, for you. Quality control will always be under our control. We're alongside for the ride, ensuring that your cars run smoothly and any downtime feels like no time at all.

We know this product like you know your back nine.

Our advanced component design ensures that the fix is within reach, and the knowledge of our technicians makes it happen fast.

FTR GOLF CANADA INC.

FTR

modern golf cars

WWW.FTRGOLF.COM

SALES INQUIRIES: INFO@FTRGOLF.COM

TECH SUPPORT:
TECHSUPPORT@FTRGOLF.COM

